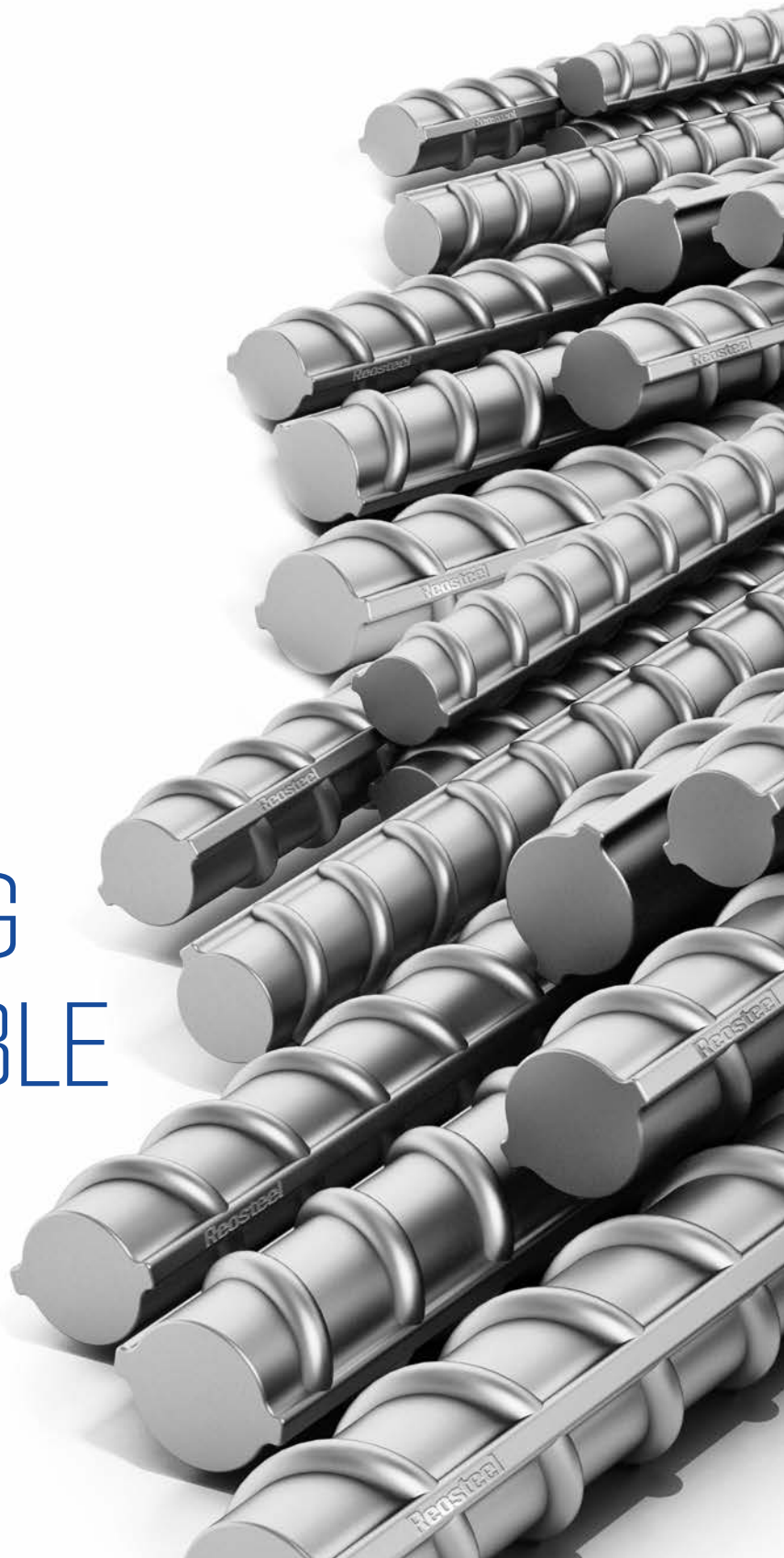




# REINFORCING A SUSTAINABLE FUTURE

---

CapabilityStatement



# CONTENTS

- 04 • About Us
- 05 • Our Services
- 06 • Our Products
- 08 • Our People
- 12 • Quality & Safety
- 13 • Why Reosteel
- 14 • Contact Us

# Excellence

## Leading with Quality, Innovation, and Sustainability

At Reosteel, we pride ourselves on delivering high-quality reinforcing steel products while maintaining a steadfast commitment to sustainability and innovation.

With a collective experience of 50 years, we stand as the fastest-growing steel company in Australia, pioneering industry transformation through our cutting-edge technology and dedication to excellence.

Our journey is defined by our unwavering commitment to quality, reliability, and sustainability; setting new benchmarks and redefining industry standards with every project we undertake.

---

# About Us

Established in 2019 in Penrith, NSW, Australia, Reosteel has quickly become a key player in the construction industry providing reinforcing steel for residential, commercial and infrastructure projects across NSW and ACT. From small homes

to expansive commercial buildings and vital infrastructure, our commitment to quality is unwavering. Our two state-of-the-art manufacturing facilities are sourced with the latest machinery from Europe, allowing us to deliver top tier products with efficiency.



## Our Vision

A future where Reosteel's innovation, reliability, and environmental stewardship drives positive changes in the industry and creates a sustainable future for generations to come.

## Our Values

- Integrity
- Quality
- Innovation
- Sustainability



# Our Services

At Reosteel, our commitment to excellence extends beyond providing high-quality reinforcing steel products; we strive to be your trusted partner throughout every stage of your project. We offer a comprehensive suite of services tailored to meet the diverse

needs of our clients across various industries. Whether you're embarking on a small-scale construction endeavour or a large-scale infrastructure development, Reosteel has the expertise, resources, and dedication to deliver tailored solutions that exceed expectations.

**Reinforcement Detailing & Scheduling:** Our skilled detailers leverage cutting-edge software and technologies including 3D and 4D modelling, to create precise and customised reinforcement drawings that optimise structural integrity and efficiency. Additionally, our scheduling experts create optimised reinforcement schedules that align with your project timeline and budget.

**Prefabrication:** We don't just conform; we innovate with our prefabricated reinforcement solutions. Crafted to your project's specific needs, our prefabrication streamlines construction, cutting labour costs and time, enhancing safety and ensuring a smoother construction process.

**Delivery & Logistics:** With a robust supply chain and logistics network, we ensure timely delivery of our products to client sites. Whether you require just-in-time delivery or scheduled shipments, our efficient logistics management ensures that your project stays on track, minimising downtime and maximising productivity.

**Testing & Quality Assurance:** We conduct rigorous testing and quality assurance procedures at every stage of the manufacturing process to ensure that our products meet and exceed industry standards. From material testing to weld inspections, we employ the latest testing methodologies and equipment to guarantee the durability, strength, and reliability of our steel products.



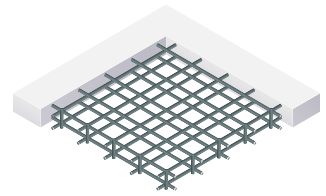
## Our Products

At Reosteel, we take pride in offering a diverse range of high-quality reinforcing steel products that meet the needs of various industries and applications. From reinforcing mesh and rebars to prefabricated cages and building accessories, our extensive product portfolio is designed to deliver superior performance, durability, and reliability in every project.



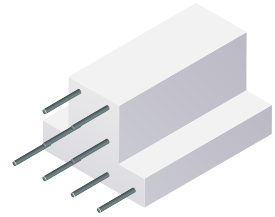
## Reinforcing and Trench Mesh:

Reosteel's reinforcing mesh is meticulously engineered to provide structural reinforcement in concrete applications. Available in a variety of configurations, including square and rectangular grids, our mesh offers excellent strength, stability, and corrosion resistance, ensuring optimal performance in demanding construction environments.



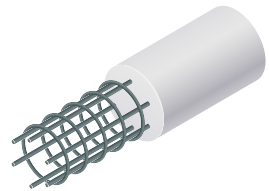
## Reinforcing Bar (Rebars):

Reosteel's reinforcing bars are manufactured to the highest standards, ensuring exceptional strength and durability for a wide range of construction applications. From standard deformed bars to high-strength reinforcement, our bars are engineered to meet the stringent requirements of structural integrity and load-bearing capacity.



## Prefabricated Cages:

Reosteel's prefabricated cages offer a convenient and efficient solution for reinforcing concrete structures. These include manual bar cages for pre-casting and large structures as well as footing cages for residential and commercial slab on-ground construction.



## Building Accessories and Products:

We provide a wide range of accessories and ancillary products including bar chairs, tie wire and expansion joints, providing you with a one-stop-shop for all your reinforcement needs.





## Our People

At Reosteel, we recognise that our greatest asset is our people. Our dedicated team of professionals is passionate about their work and committed to service excellence as they strive to make a positive impact.

From our skilled engineers and fabricators to our customer service representatives and support staff, every member of the Reosteel team plays a vital role in our success.

### Expertise & Experience:

Our team brings a wealth of industry expertise and experience to every project we undertake. With decades of combined experience in the steel industry, our people possess the knowledge, skills, and insights needed to deliver innovative solutions, overcome challenges, and exceed customer expectations.

### Collaborative Culture:

We foster a collaborative and inclusive work culture where every team member is valued, respected, and empowered to contribute their best. Through open communication, teamwork, and shared goals, we leverage the diverse talents and perspectives of our team to drive creativity, innovation, and continuous improvement.

### Professional Development:

We invest in the professional development and growth of our team members, providing ongoing training, education, and opportunities for advancement. By supporting all facets of their growth, we keep our team ahead in industry trends, technologies, and best practices.



## Safety & Well-being:

The health, safety, and well-being of our employees are paramount. We maintain a proactive approach to safety, implementing rigorous safety, training programs, and safety incentives to create a culture of safety awareness and accountability.



## Customer Focus:

Above all, our team is dedicated to putting our customers first. We listen to their needs, understand their challenges, and collaborate closely with them to deliver tailored solutions that meet their specific requirements and exceed their expectations.

At Reosteel, our people are the driving force behind our success. Through their expertise, dedication, and passion for excellence, we are able to deliver superior results and build lasting relationships with our customers and partners.



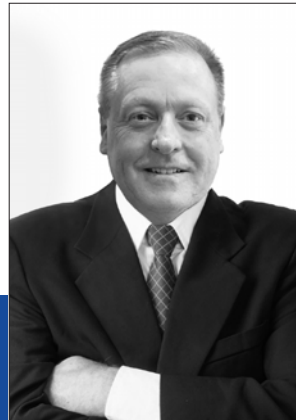


# REO

ReoSteel is one of Australia's leading suppliers of steel reinforcing products

# STEEL

“At Reosteel, we strive to solidify our position as a leader in the Australian steel industry, demonstrating that with dedication and vision, anything is possible. Our team’s goal is to drive significant growth and success by expertly managing all aspects of our operations, from strategic planning to day-to-day execution.”



Mark Campbell

## Executive General Manager

Mark Campbell serves as the Executive General Manager of Reosteel, bringing with him a wealth of experience and a strong track record of leadership in the steel industry. With a career spanning over 40 years, Mark has established himself as a respected figure in the field, renowned for his strategic vision, operational expertise, and commitment to driving organisational success.

In his role, Mark is responsible for overseeing all aspects of the company’s operations, from strategic planning and business development to day-to-day management and execution. Under his guidance, Reosteel has experienced significant growth and success, emerging as a leader in the Australian steel industry.



# Quality & Safety

Quality is the cornerstone of our operations. We understand that in the construction industry, there can be no compromises when it comes to quality.

That's why we implement stringent quality control measures at every stage of our production process, ensuring that our steel products meet and exceed industry standards.

We are proud to hold accreditations that demonstrate our commitment to maintaining the highest standards in workplace safety and regulatory compliance.

**At Reosteel, we prioritise continuous improvement in safety practices through regular training sessions, stringent protocols, and ongoing assessments.**

## Training, Hazard identification, & Risk mitigation strategies

By upholding the strictest safety standards, we aim to provide peace of mind to our stakeholders and contribute to the overall well-being of our workforce and communities.





# WHY REOSTEEL



## Innovative Technology

Reosteel stands out for its relentless innovation. Our new plant features state-of-the-art machines and technology exclusive to Australia, offering unmatched solutions. Advanced automation and precision engineering enhance productivity, efficiency, and quality, setting new industry standards to confidently achieve client goals.




## Colour Tagging

We ensure top quality and performance through on-site testing and verification services. Our experts conduct rigorous tests and inspections at every project stage, from material selection to final installation, ensuring compliance with industry standards and minimising risks for optimal project outcomes.



## Testing & Verification

We implement a colour tagging system to ensure accurate identification and utilisation of products on-site. This eliminates errors, streamlines workflows, and enhances efficiency, saving time and resources while minimising on-site disruptions.



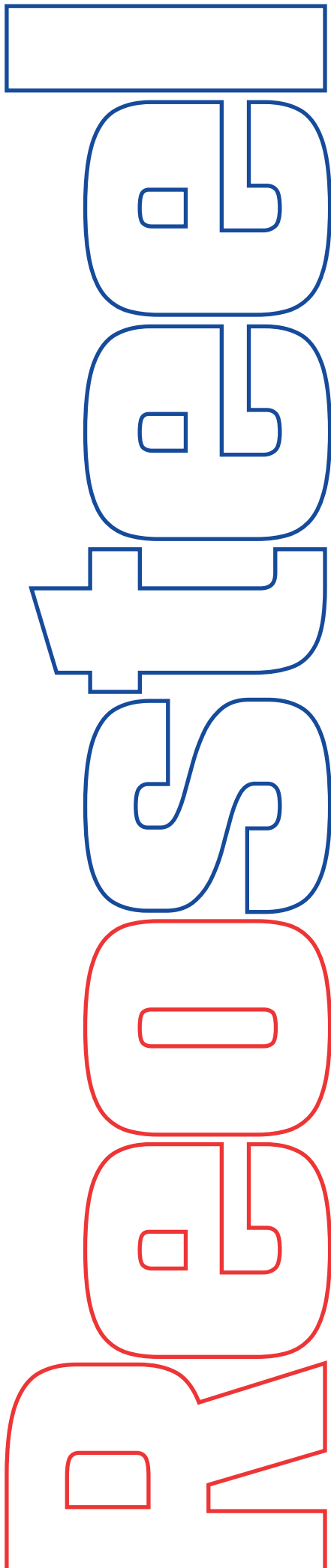
## Sustainability

Our proactive approach to problem-solving allows us to address issues promptly, minimising downtime and disruption. Whether dealing with design flaws, manufacturing errors, or logistical challenges, we ensure projects stay on track and on budget, delivering reliable results.



## Efficient Support

We partner with “One Tree Planted” to offset carbon emissions by planting a tree for every tonne of steel sold. Choosing Reosteel means achieving superior steel solutions and contributing to a sustainable, eco-friendly future, positively impacting the environment and society.



## Contacts



**1800REOSTEEL**  
**1800 736 783**



**enquiries@reosteel.com.au**



### **HEAD OFFICE**

Level 24  
Three International Towers  
300 Barangaroo Avenue  
Barangaroo NSW 2000



### **MANUFACTURING FACILITIES**

**Sydney:**  
270 Beech Road  
Casula NSW 2170

**Canberra:**  
2 Paspaley Street  
Hume ACT 2620

**[www.reosteel.com.au](http://www.reosteel.com.au)**

---





**1800REOSTEEL**  
**reosteel.com.au**

